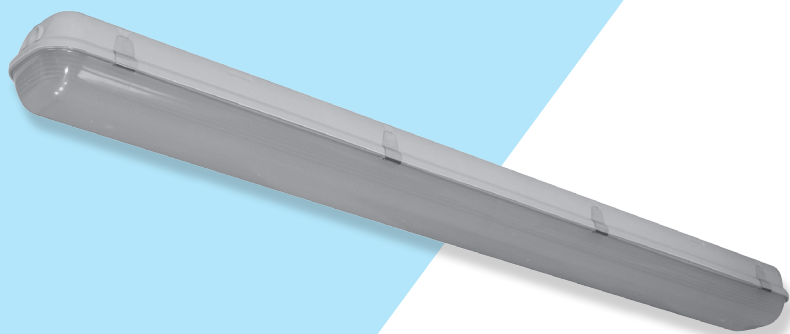
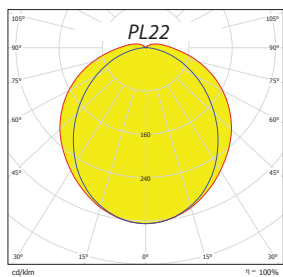


# PL

## LED prachotěsná svítidla LED waterproof light fittings



PL22



PL22



ZAHA + ZAKO



PL21



PL11



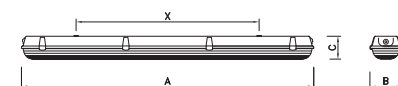
### PL - high power

PLV1	W	lm	lm/W	A	B	C	X	kg
PL21MECOV1	37	4100	111	1275	135	100	800	2,5
PL22MECOV1	75	7800	104				1100	2,6
PL21LECOV1	59	5800	98	1572	135	100	800	2,4
PL22LECOV1	118	10800	92				1100	2,8

### PL - energy saver

PLV2	W	lm	lm/W	A	B	C	X	kg
PL11MECOV2	22	2500	114	1275	84	100	800	1,9
PL22MECOV2	42	4800	114		135			2,5
PL11LECOV2	32	3400	106	1572	84	100	1100	2,4
PL22LECOV2	60	6500	108		135			2,8

& - 3 = 3000K, 4 = 4000K, lm - vyzářený světelný tok / luminaire light output



Technical drawing showing dimensions A, B, C, X, and Y.

Technical drawing showing dimensions A, B, C, X, and Y.

Technical drawing showing dimensions A, B, C, X, and Y.

Technical drawing showing dimensions A, B, C, X, and Y.

Technical drawing showing dimensions A, B, C, X, and Y.

Technical drawing showing dimensions A, B, C, X, and Y.

Uvedené údaje mohou být během platnosti tohoto katalogu bez upozornění změněny. Výpadek jednotlivého LED čipu, odchylka světelného toku a příkonu svítidla +/-10% jakož i teploty chromatičnosti +/-150K jsou v souladu s platnými standardy přípustné a nejsou důvodem k reklamaci svítidla. | Due of MODUS program of products development a data can be changed without notice. Luminous flux and connected electrical load are subject to an initial tolerance of up to +/- 10%. Color temperature is subject to a tolerance of up to +/-150 K from the nominal value. The failure of 1 LED points causes no functional impairment to the lighting performance of the luminaire and is therefore no reason for complaint.

**Body:**

High quality glass reinforced pressed polyester PS body + galvanized metal sheet, INOX clips

**Optic:**

CO – polycarbonate opal cover

**LED (&):**

Mid Power LED with constant current driver

3 – 3000K

4 – 4000K

**Wiring:**

ND – not dimmable (standard)

DALI – dimmable DALI

DIM – dimmable 1-10V

**Application:**

These light fittings can be used as surface mounted or suspended.

**Accessories:**

Cord suspension – 54102

Protection grid – OM

Suspension hook – ZAHA

Fixation clip – ZAKO

**Versions:**

F – with flexible cord

P – continuous assembly (through wiring)

5x1,5 mm<sup>2</sup>

**Note:**

The stainless clips for surface mounting or suspension (ZAHA + ZAKO) are included in each packing.

These fittings are intended into the normal condition of environment,  $t_a=25^{\circ}\text{C}$ .

PL - high power	PL21M V1	PL21L V1	PL22M V1	PL22L V1
Příkon / Power	37 W	59 W	75 W	118 W
Výkon svítidla / luminaire light output	3900 lm	5300 lm	7400 lm	10300 lm
Efektivita / efficiency	105 lm/W	91 lm/W	99 lm/W	87 lm/W

PL - energy saver	PL11M V2	PL11L V2	PL22M V2	PL22L V2
Příkon / Power	22 W	36 W	42 W	60 W
Výkon svítidla / luminaire light output	2500 lm	3400 lm	4800 lm	6500 lm
Efektivita / efficiency	114 lm/W	106 lm/W	114 lm/W	108 lm/W
Náhrada zářivek / conventional lamps equivalent *	1x36W	1x58W	2x36W	2x58W

\* orientační srovnání, nenahrazuje světelnotechnický výpočet / approximate comparison, does not replace light calculation

**PL 2 2 M E C O 4 V1 / 2x700ND**

Typ svítidla / Luminaire type

Šířka korpusu / Body width:  
1=úzký / narrow (86mm), 2= široký / wide (136mm)

Počet řad LED / Nr of light strips

Délka korpusu / Body length:  
S = 600, M=1200, L= 1500mm

Materiál korpusu / Body material:  
E=polyester, C = polykarbonát / polycarbonate

Materiál krytu / Cover material:  
S=polystyrol, C = polykarbonát / polycarbonate, M = PMMA

Typ krytu / Cover type:  
O = opál / opal

Teplota chromatičnosti / Color temperature:  
3=3000K  
4=4000K

Použité LED / Used LEDs

Typ zdroje / Driver type:  
ND – neregulovatelný zdroj / no dimmable  
DIM – regulovatelný zdroj analog. stmívatelný 1-10V / dimmable 1-10V  
DALI – regulovatelný zdroj dig. stmívatelný DALI / dimmable DALI