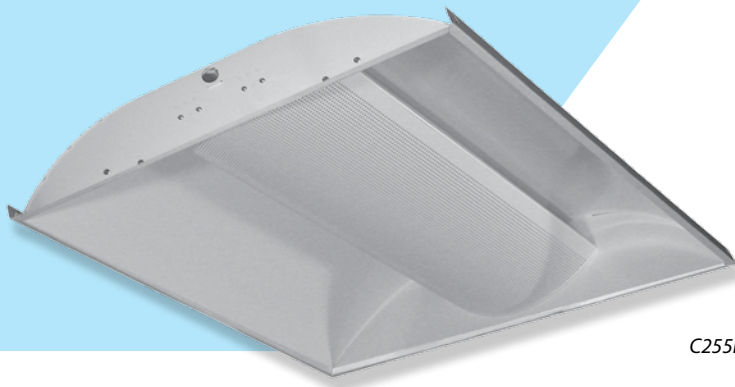
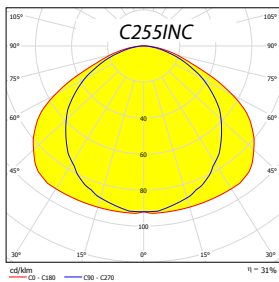


Recessed indirect fittings

C INC, C KO, C KP



C255INC



C255KP



Body:

White painted (RAL 9003) metal sheet

Optic (&):

INC - perforated lamps cover, white painted reflectors
 KO - opal cover, white painted reflectors
 KP - prismatic cover, white painted reflectors

Wiring (#):

compensated, ballast cat. B (with lamps TC-L 36 or 40W only)
 EP - high frequency ballast HFB (standard)
 EPSA - HFB analogue dimmable (1-10 V)
 EPSD - HFB digital dimmable TRIDONIC ECO
 EPSDD - HFB digital dimmable DALI
 MULTIWATT - universal HFB for T5 lamps

Application:

Recessed fitting for installation into false ceiling with visible supporting structure (600x600/625x625 modules).

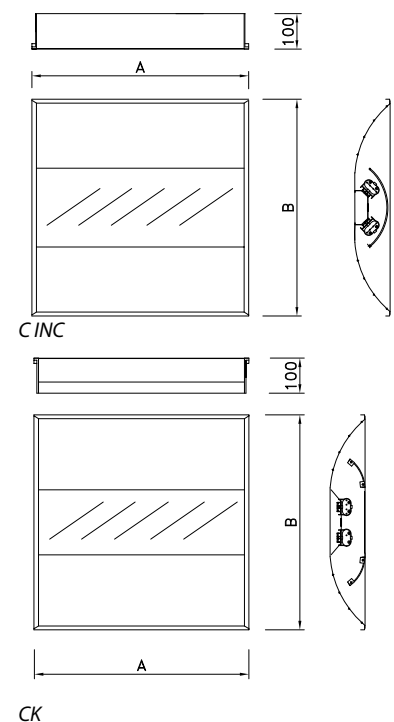
Accessories:

Reduction frame for installing light fitting module 600 into false ceiling module 625.

Versions (@):

600 - for 600 module
 625 - for 625 module
 ISO - external connection board ISODOM
 F - with flexible cord
 NZ - emergency pack
 EP2 - double-circuit wiring

For more info see pages 24-25.



Typ	⊗	W	Modul 600		Modul 625		kg
			A	B	A	B	
C136INC #@	TC-L	1x36	596	596	622	622	3,7
C236INC #@	TC-L	2x36	596	596	622	622	3,7
C140 &#@	TC-L	1x40	596	596	622	622	3,7
C240 &#@	TC-L	2x40	596	596	622	622	3,7
C155 &#@	TC-L	1x55	596	596	622	622	3,7
C255 &#@	TC-L	2x55	596	596	622	622	3,7
C214(24) &#@	T5	2x14(24)	596	596	622	622	2,6
C414(24)KO(P) #@	T5	4x14(24)	596	596	622	622	3,7
C255/214(24)KO(P) #@	TC-L + T5	2x55 + 2x14(24)	596	596	622	622	6,5