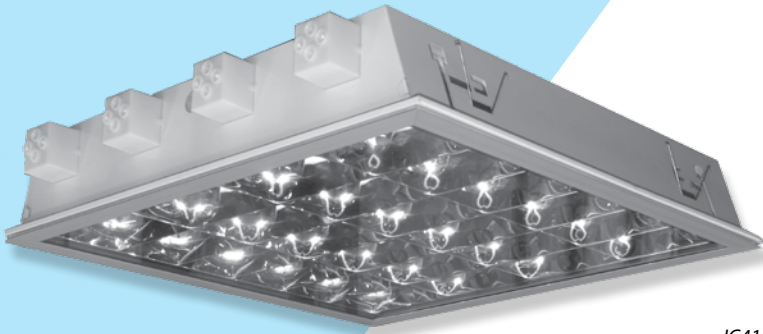


Recessed louvre fittings with cover, IP54



IC418ALDP

Body:

White painted (RAL 9003) metal sheet

Optic:

ALDP - double parabolic louvre

category C2 of highly polished

aluminium, clear fire resistant PET

cover with eloxal aluminium frame

MATDP - double parabolic louvre category

C2 of mat aluminium, clear fire resistant

PET cover with eloxal aluminium frame

Wiring (#):

compensated, ballast cat. B (standard for T8 lamps fittings)

EP - high frequency ballast HFB

(standard for T5 lamps fittings)

EPSA - HFB analogue dimmable (1-10 V)

EPSD - HFB digital dimmable TRIDONIC ECO

EPSDD - HFB digital dimmable DALI

Application:

Recessed light fitting for installation into

false ceiling with visible supporting

structure (600x600/625x625 modules)

or gypsum plasterboard.

Recommended for use in laboratories, hospitals, food industry,...

Accessories:

Fixing clips for installation into gypsum plasterboard – 54214.

Versions (@):

600 - for 600 module

625 - for 625 module

ISO - external connection board ISODOM

KIT - external connection board BJB

K - with WIELAND connector

F - with flexible cord

NZ - emergency pack

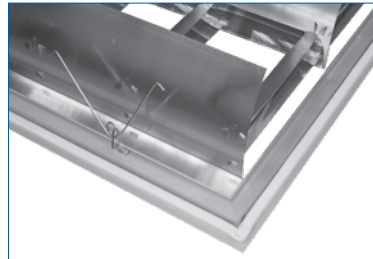
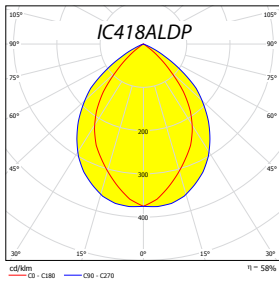
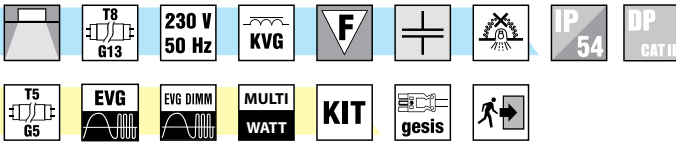
OK - double-circuit wiring

Notes:

Luminaire meets IP54 protection when installed on a ceiling, on a user side.

The upper part of the luminaire (hidden above the ceiling) has IP20 protection

For more info see pages 24-25.



Typ	W	Modul 600			Modul 625			kg
		A	B		A	B		
IC418 &#@	4x18	596	596	576x576	622	622	602x602	4,9
IC236 &#@	2x36	1196	296	1176x276	1246	310	1226x290	4,9
IC414(24) &#@	4x14 (24)	596	596	576x576	622	622	602x602	4,2

