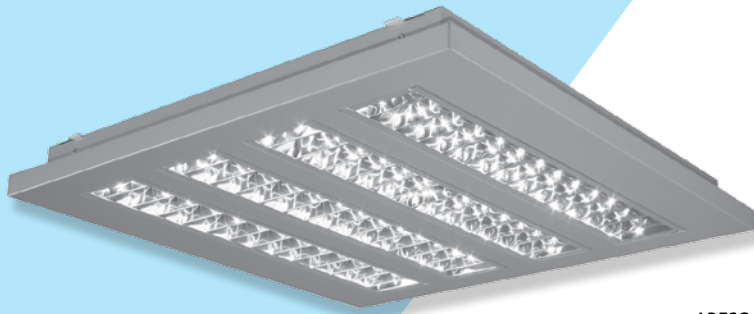
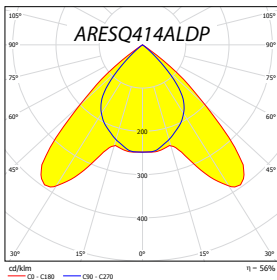


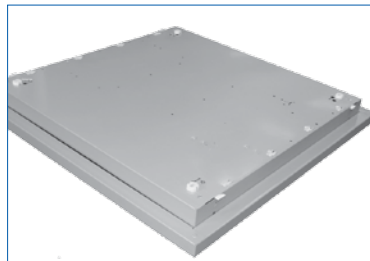
Interior fittings



ARESQ414ALDP



PRINCIPLE OF FIXING THE COVER



ARES Q414 - UPPER SIDE

Body:

Grey (RAL 9007) painted metal sheet

Optic:

ALDP - double parabolic louvre category

C2 of highly polished aluminium

MATDP - double parabolic louvre

category C2 of mat aluminium

AL - parabolic louvre of highly polished aluminium with mat crossing blades

Wiring:

EP - high frequency ballast HFB (standard)

EPSA - HFB analogue dimmable (1-10 V)

EPSD - HFB digital dimmable TRIDONIC ECO

EPSDD - HFB digital dimmable DALI

MULTIWATT - universal HFB for T5 lamps

Application:

Surface or pendant installation.

These fittings are recommended for offices, for lighting areas with high requirements for light and glare control.

Accessories:

Suspension set ZH22

Versions (@):

B - surface finished in white (RAL 9003)

Note:

ARESQ - pendant fittings for direct indirect illumination (open upper side of the fittings), suspension set included

ARESQP - surface installed fittings for direct illumination only (closed upper side of the fittings),

	W	A	B	X	R	kg
ARESQ414 (24) &#@	4x14 (24)	640	640	500	450	4,5
ARESQP414 (24) &#@	4x14 (24)	640	640	500	450	4,5

