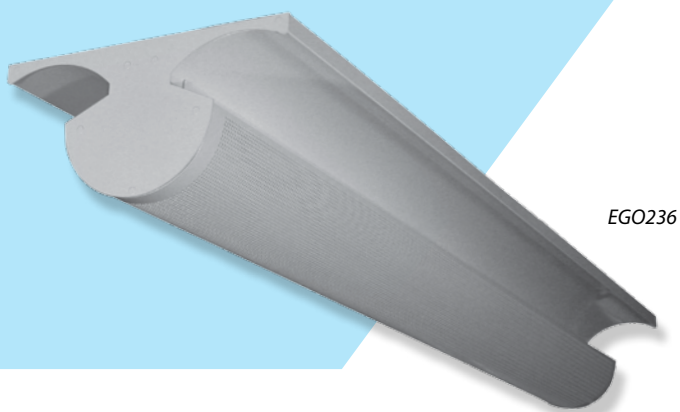


Pendant / surface fittings for indirect illumination



EGO236

Body:

White (RAL 9003) painted metal sheet

Optic:

perforated lamps cover, white painted reflectors

Wiring (#):

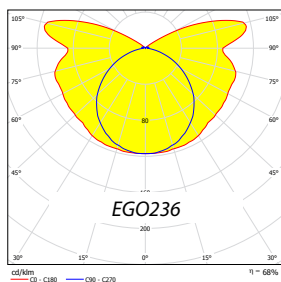
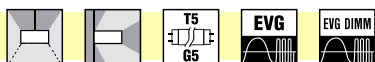
compensated, ballast cat. B (standard wiring)
 EP - high frequency ballast HFB
 EPSA - HFB analogue dimmable (1-10 V)
 EPSD - HFB digital dimmable TRIDONIC ECO
 EPSDD - HFB digital dimmable DALI

Application:

Surface (ceiling, wall) / pendant
 luminaires for interior lighting
 These fittings are recommended for offices,
 for lighting areas with high requirements
 for light and glare control.

Note:

Cord suspension set ZH11 included in fitting.



cd/m²
 C1 - C80
 C86 - C270
 η = 88%

Typ	W	A	X	R	kg
EGO118#	1x18	622	480	480	3,0
EGO218#	2x18	622	480	480	3,5
EGO136#	1x36	1232	950	950	5,2
EGO236#	2x36	1232	950	950	5,5
EGO158#	1x58	1532	1250	1250	6,9
EGO258#	2x58	1532	1250	1250	7,7
EGO228(54)#	2x28(54)	1182	886	886	5,2
EGO235(49,80)#	2x35(49,80)	1482	1168	1186	7,0

