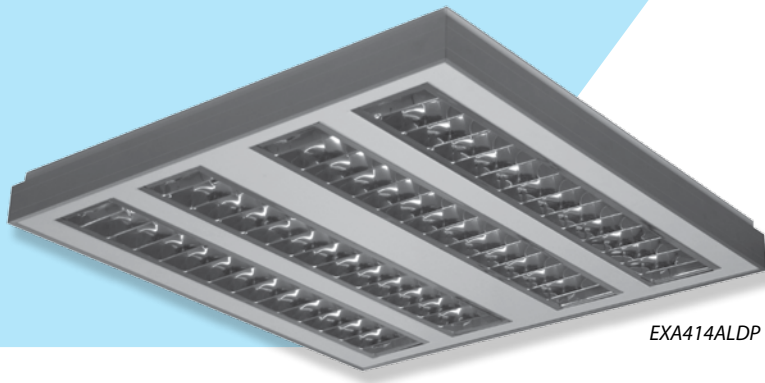
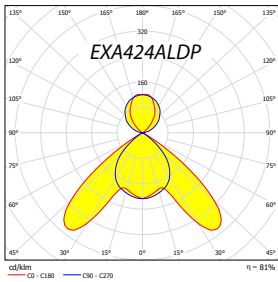
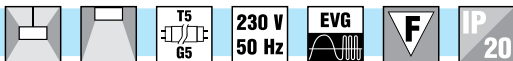


Pendant / surface interior fittings



EXA414ALDP



EXA ALDP

Body:

Eloxal aluminium profile

Optic:

ALDP - double parabolic louvre category C2 of highly polished aluminium
MATDP - double parabolic louvre category C2 of mat aluminium

Wiring (#):

EP - high frequency ballast HFB (standard)
EPSA - HFB analogue dimmable (1-10 V)
EPSD - HFB digital dimmable TRIDONIC ECO
EPSDD - HFB digital dimmable DALI
MULTIWATT - universal HFB for T5 lamps

Application:

Pendant luminaires for direct-indirect lighting of interiors (some variants of the fixture can be installed as a surface mounted).

For offices, common and exhibition spaces, etc.

Versions (@):

EXA - pendant fittings for direct / indirect illumination - suspension set included (ZH11 set for 2-lamps luminaires, ZH22 set for 4-lamps luminaires)

EXAD - pendant or surface installed fittings for direct illumination only (closed upper side of the fittings)

NZ - emergency pack

RAL9006 - luminaire cover finished in grey colour RAL 9006

	W	A	B	X	Y	R	S	kg
EXA414 (24)&#@	4x14 (24)	603	603	450	520	520	520	4,0
EXA228 (54)&#@	2x28 (54)	1200	300	1120	220	1050	220	3,3
EXA235 (49,80)&#@	2x35 (49,80)	1500	300	1420	220	1350	220	5,4

