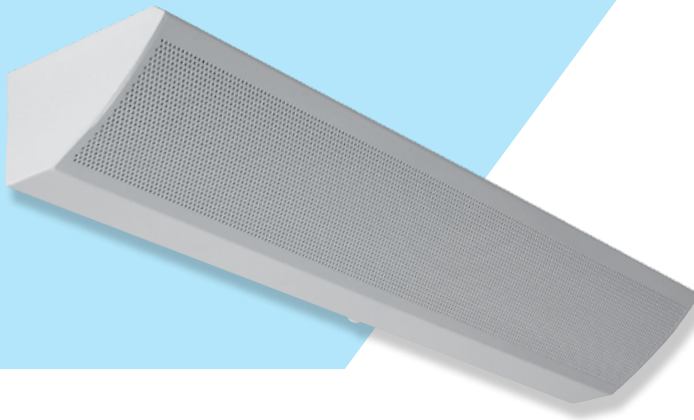


Wall-mounted interior light fittings



SPW118

Body:

White painted (RAL 9003) metal sheet

Optic:

Perforated body, prismatic upper cover

Wiring:

compensated, ballast cat. B (standard, except TC-L 55W lamps)

EP - high frequency ballast HFB

EPSA - HFB analogue dimmable (1-10 V)

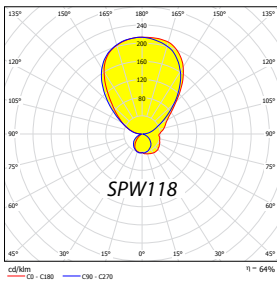
EPSD - HFB digital dimmable TRIDONIC ECO

EPSDD - HFB digital dimmable DALI

Application:

Wall-mounted interior light fittings

For direct / indirect illumination



	W	Ø	A	X	kg
SPW118#	1x18	T8	645	450	2,0
SPW136TCL#	1x36	TC-L	645	450	2,2
SPW136#	1x36	T8	1255	1060	3,5
SPW236TCL#	2x36	TC-L	1255	1060	4,0
SPW155#	1x55	TC-L	645	450	1,8
SPW255#	2x55	TC-L	1255	1060	3,0

