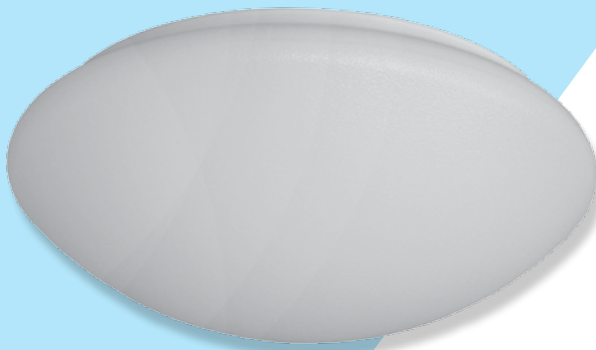


Residential light fittings

BRKL



BRKL375

Body:
White painted (RAL 9003) metal sheet

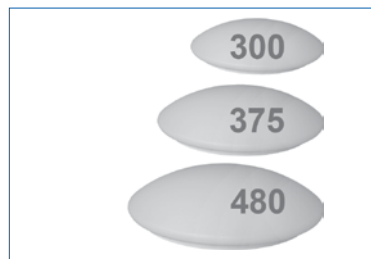
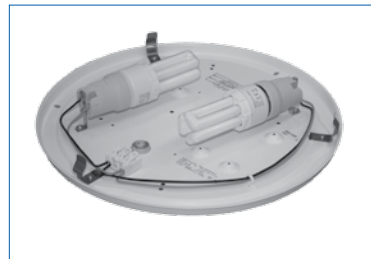
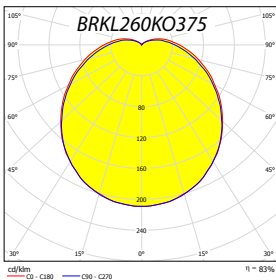
Optic:
KO - opal PMMA cover

Wiring:
N - uncompensated, ballast cat. B
EP - high frequency ballast

Application:
Surface mounted luminaire
for residential use.

Version:
300 - small fitting (Ø 300 mm)
375 - middle fitting (Ø 375 mm)
480 - large fitting (Ø 480 mm)

Note:
Fittings with E27 lampholders can be used with bulb 60W at most.



		W	⊗	∅	C
BRKL 300	BRKL160KO300/E27	1x60	E27	300	105
	BRKL209KO300/G23	2x9	TC-S	300	105
BRKL 375	BRKL211KO375/G23	2X11	TC-S	300	105
	BRKL160KO375/E27	1x60	E27	375	125
	BRKL260KO375/E27	2x60	E27	375	125
	BRKL122KO375/2GX13	1x22	T5 R	375	125
	BRKL218KO375/G24#	2x18	TC-D	375	125
	BRKL136KO375/2G10#	1x36	TC-F	375	125
BRKL 480	BRKL140KO375/2GX13	1x40	T5 R	375	125
	BRKL260KO480/E27	2x60	E27	480	150
	BRKL224KO480/2G10#	2x24	TC-F	480	150
	BRKL236KO480/2G10#	2x36	TC-F	480	150

