



EQUIPMENT FOR ATEX

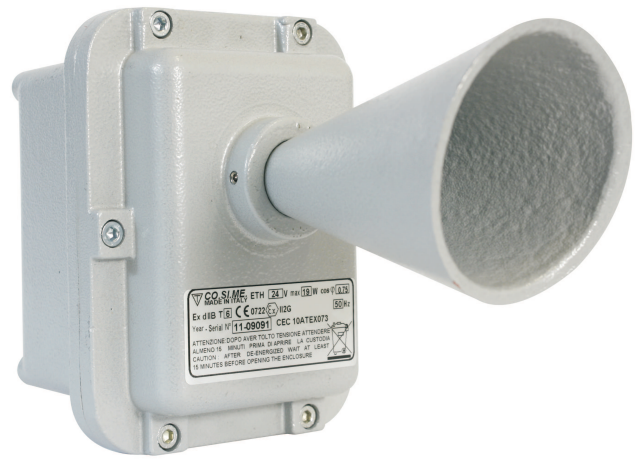
TROMBA  
HORN

ETH ..CA



GAS	II2G Ex d IIB T6 ÷ T5		Zone 1- Zone 2
			<span>❄ -20°C ÷ ☀ +40°C</span> <span>❄ -20°C ÷ ☀ +60°C</span>

**Materiale :** Corpo, coperchio e tromba di lega leggera  
**Installazione :** a parete  
**Viti :** In acciaio zincato a richiesta acciaio inox  
**Ingresso :** N° 1 ø3/4"  
  
**Material :** Light alloy body, cover and horn cone  
**Installation :** wall  
**Hardware :** galvanized steel, on demand stainless steel  
**Cable entry :** N°1 ø3/4"



Codice Code	Tensione Voltage [V]	Potenza Power [VA]	Frequenza Frequency [Hz]	Livello sonoro 1 mt. 1 mt. level sound [Db]	Peso Weight [kg]
ETH 12CA	12 Vac	35	50 ÷ 60	95 ÷ 110	2,2
ETH 24CA	24 Vac	115	50 ÷ 60	95 ÷ 110	2,2
ETH 48CA	48 Vac	110	50 ÷ 60	95 ÷ 110	2,2
ETH 110CA	110 Vac	70	50 ÷ 60	95 ÷ 110	2,2
ETH 220CA	230 Vac	75	50 ÷ 60	95 ÷ 110	2,2

