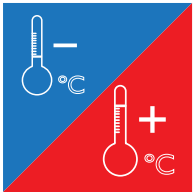
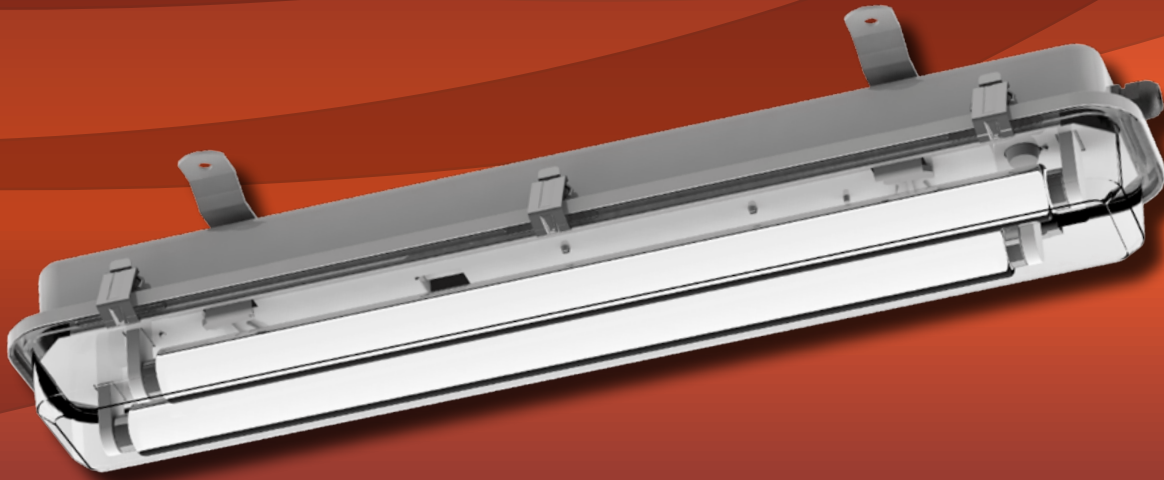


INL -35°C



TYP // TYPE	L	LI	H	B
INL340- x18	730	430	114	153
INL340- x36	1340	950	114	153

TECHNICAL DATA:

Light source type: T8
Protection class: I
Power factor: $\geq 0,85$
Ambient temp.: from -35°C to +40°C

Lampholder: G13
Protection deg.: IP 66, IP 67
Impact value: IK10

CONSTRUCTION:

Housing: galvanized steel sheet, powder painted
Diffuser: strengthened polycarbonate UV stabilized
Mounting plate: zinc coated steel sheet, powder painted

MOUNTING:

Luminaire for direct installation on ceiling, wall or suspending

CONNECTION:

Terminal block: 3x4 mm²

Luminaire with special lamps and starters suitable to work in low temperature.